



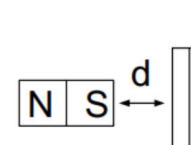
DESCRIPTION / BESCHREIBUNG	MHS-102 2-Wire		MHS-102 3-Wire		MHS-901 2-Wire		MHS-901 3-Wire	
LENGTH mm	23		23		25,5		25,5	
WIDTH mm	14,0		14,0		11		11	
HEIGHT mm	5,9		5,9		3,0		3,0	
Type	Unipolar - Switch (current output)		Unipolar - Switch (voltage output)		Unipolar - Switch (current output)		Unipolar - Switch (voltage output)	
GAUSS AVAILABLE	94	60	120	55	94	60	120	55
TYPE	Switch	Switch	Switch	Switch	Switch	Switch	Switch	Switch
Bon (typ.) @25°C mT	9,4	6,0	12,0	5,5	9,4	6,0	12,0	5,5
Boff (typ.) @25°C mT	7,6	4,1	7,0	3,7	7,6	4,1	7,0	3,7
SUPPLY VOLTAGE (operate) VDC	+3..+24	+3..+24	+2.7..+24	+2.7..+24	+3..+24	+3..+24	+2.7..+24	+2.7..+24
SUPPLY VOLTAGE (absolute) VDC	-18..+28	-18..+28	-18..+28	-18..+28	-18..+28	-18..+28	-18..+28	-18..+28
CURRENT CONSUMPTION ↓ mA	5.0..7.0	2,5..5.0	1.1..2.4	1.1..2.4	5.0..7.0	2,5..5.0	1.1..2.4	1.1..2.4
CURRENT CONSUMPTION ↑ mA	12..17	12..17	1.1..2.4	1.1..2.4	12..17	12..17	1.1..2.4	1.1..2.4
SWITCHING SPEED kHz	12	12	12	12	12	12	12	12
HOUSING MATERIAL	PBT20GF	PBT20GF	PBT20GF	PBT20GF	PBT20GF	PBT20GF	PBT20GF	PBT20GF
HOUSING COLOR	●	●	●	●	●	●	●	●
CABLE TYPE	UL1569	UL1569	UL1569	UL1569	UL1569	UL1569	UL1569	UL1569
CABLE AWG	24	24	24	24	24	24	24	24
CABLE COLOR	●●	●●	●●●	●●●	●●	●●	●●●	●●●

► FLANGE

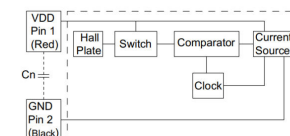
OPERATION DISTANCE / SCHALTABSTÄNDE*

DESCRIPTION / BESCHREIBUNG	2-WIRE		3-WIRE	
GAUSS VALUES	94	60	120	55
TYPICAL (mm) d	15.0	18.5	13.0	19.0

*Average values and using masetec reference magnet NdFeB 21x7x4.7mm



2-WIRE



3-WIRE

